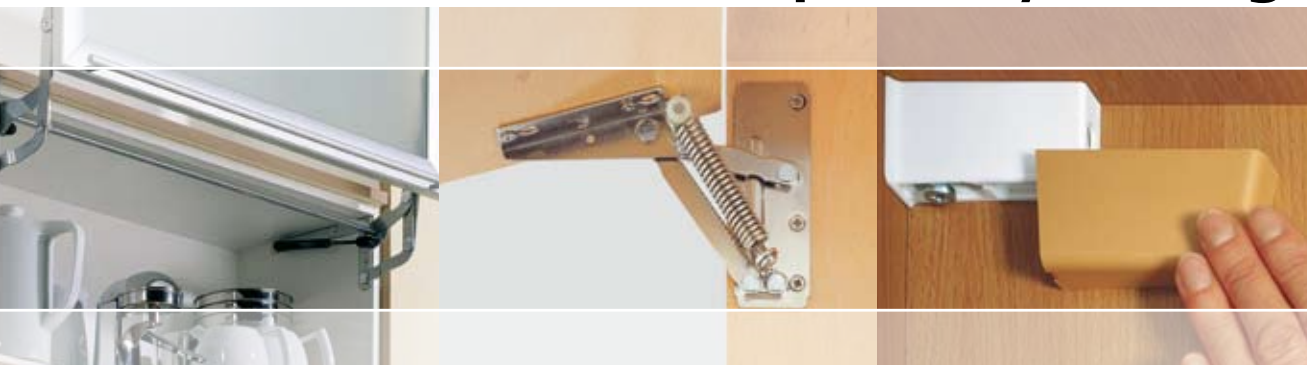


Specialty fittings



... right for living and lifestyle

SAH 130 SAH 131

Tough technology with excellent product value

- Patented, unthreaded tip of depth adjustment screw for safety during mounting
- Combo-hook for hook and rail suspension
- Load capacity per bracket 55 kg to DIN 68840

Item



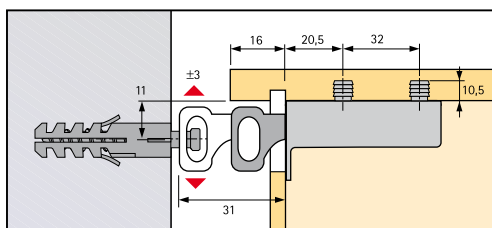
SAH 130

- For rail and hook suspension
- Load capacity 550 N per bracket
- Adjustment options
Height: ± 7 mm
Depth: max. 15 mm, via patented depth adjustment screw
Side: ± 3 mm for hook suspension
- Adjustment screws secured against unintentional removal
- Lift-off height: 7.5 mm
- Safe technology in an attractive design: cover cap in 3 finishes, easy to slide on or off, design award.
- Use with suspension rail type A, B or L – see page 12-13
- Hook suspension: the shape of the hook prevents the cabinet from slipping off
- Steel/plastic

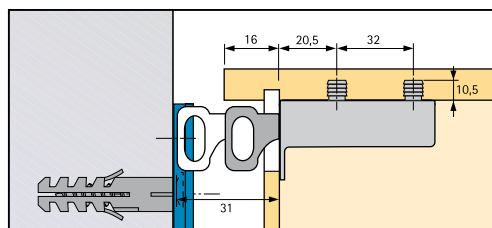
Item	Order no. left	Order no. right	PU
SAH 130 T19*	1 066 278	1 066 279	100
SAH 131 T18*	1 071 018	1 071 017	100

* Default setting of hook, measured from rear plane to end of hook

Cabinet suspension brackets SAH 130

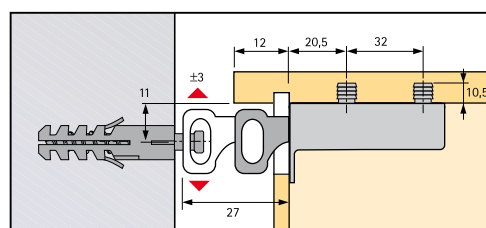


Hook suspension

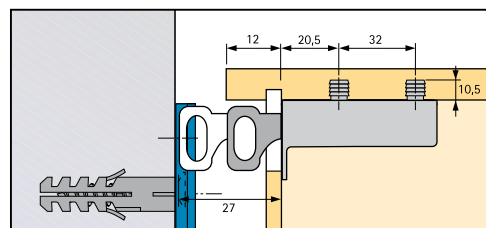


Rail suspension

Cabinet suspension brackets SAH 131



Hook suspension

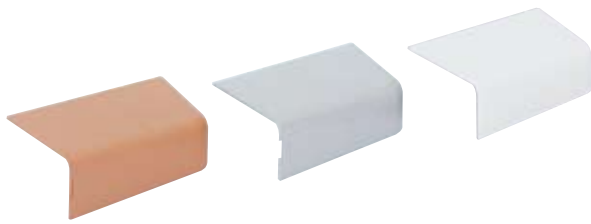


Rail suspension

Item

Cover caps for SAH 130 and SAH 131

Plastic

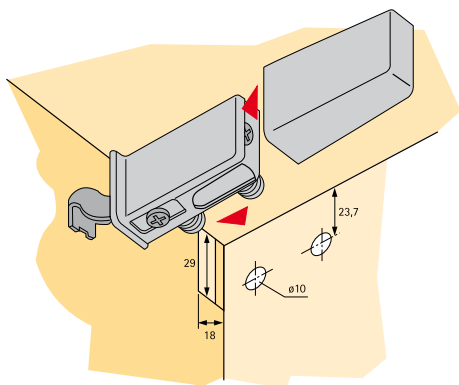


Item	Order no. left	Order no. right	PU
white	1 066 339	1 066 338	1000
silver-grey	1 067 732	1 067 733	1000
beech	1 066 290	1 066 291	1000

Mounting

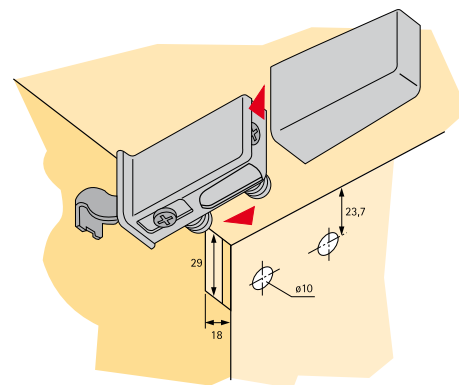
Cabinet suspension brackets SAH 130

min. back panel recess 16 mm

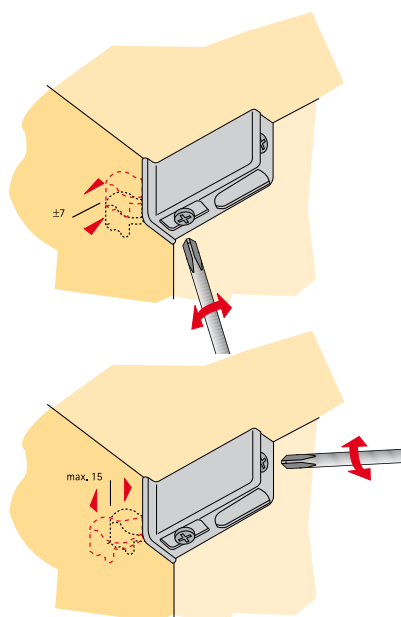


Cabinet suspension brackets SAH 131

min. back panel recess 12 mm



Adjustment



Accessories for cabinet suspension bracket – see page 12-13

Note on load capacity of cabinet suspension brackets – see page 12

SAH 116

Item

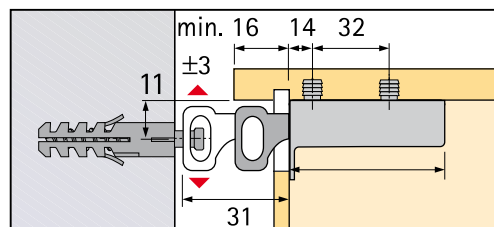
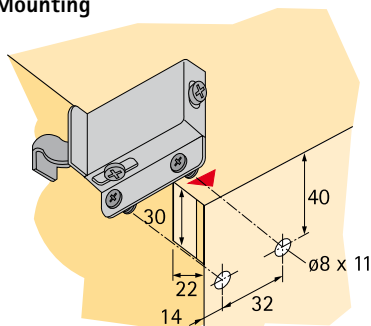


SAH 116 press-in version

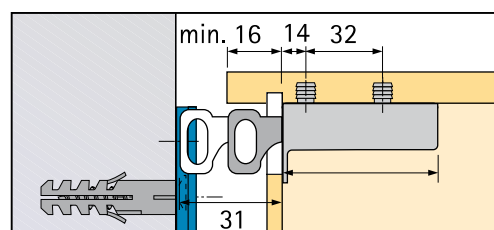
- For rail and hook suspension
- Load capacity 600 N per bracket
- Adjustment options
 Height: ± 7 mm
 Depth: 15 mm
 Side adjustment:
 ± 3 mm for hook suspension
 ± 7 mm for rail suspension
- Hook suspension: the shape of the hook prevents the cabinet from slipping off
- Nickel-plated steel

Item	Order no. left	Order no. right	PU
SAH 116	1 036 603	1 036 604	100

Mounting

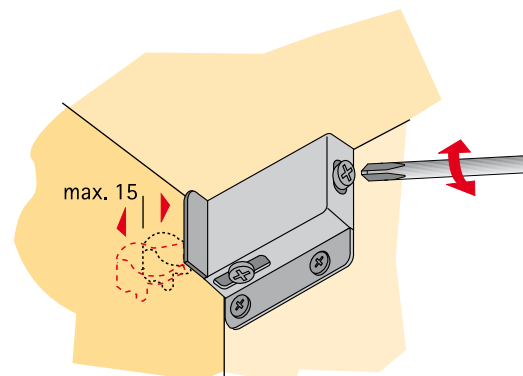
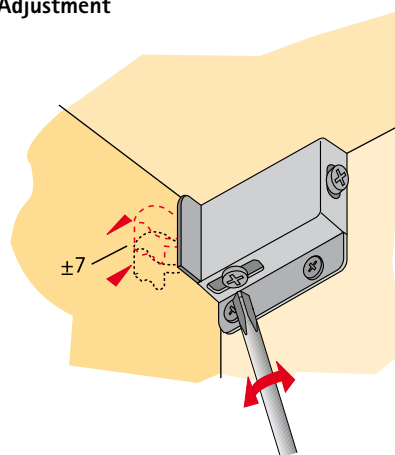


Hook suspension



Rail suspension

Adjustment



SAH 209

Item

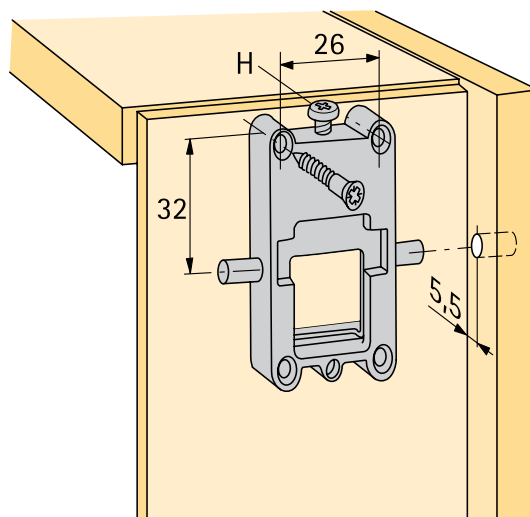
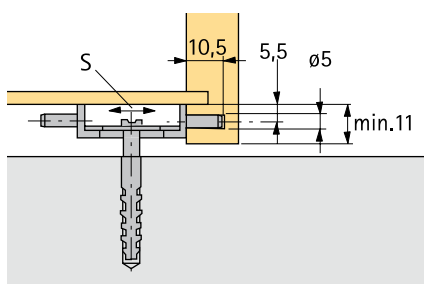


SAH 209 – screw-on assembly behind back panel

- For hook suspension
- Use on left or right
 - Load capacity 100 N per bracket
 - With \varnothing 5 mm dowels on sides
 - Adjustment options
 - Height: ± 5 mm
 - Side: ± 7 mm for hook suspension
- Lift-off height: 7.5 mm
- **Hook suspension:** the shape of the hook prevents the cabinet from slipping off
- Steel/plastic
- Suspension hook
 - \varnothing 6 x 50 mm
- Fixingscrews
 - \varnothing 3,5 x 30 mm countersunk screws

Item	Finish	Order no.	PU
SAH 209	housing white	9 045 794	200
Suspension hook hook 6 x 50 mm	bright	1 004 973	500

Mounting





Item



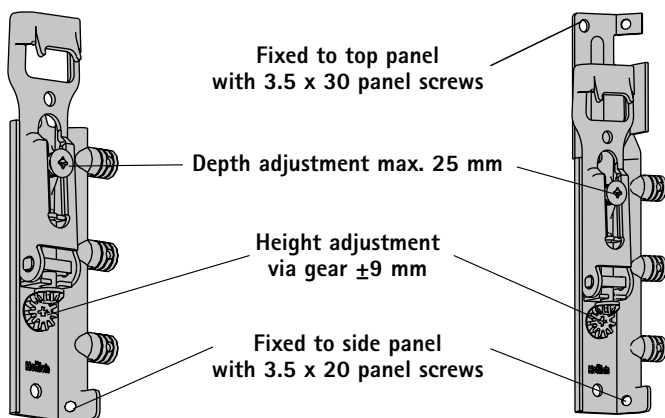
Steel cabinet suspension brackets mounted behind back panel

- For rail and hook suspension
- Load capacity 650 N per bracket
- Fixed with 3 dowels in the side panel and screwed into the back panel groove
- Min. back panel recess 16 mm
- Fast and convenient height adjustment via rugged adjustment screw and gear: ± 9 mm
- Depth adjustment: max. 25 mm
- Side adjustment ± 3 mm for hook suspension, $\pm 7,5$ mm for suspension rail
- Adjustment screws secured against unintentional removal
- Lift-off height: 7.5 mm
- Hook suspension: the shape of the hook prevents the cabinet from slipping off
- Use with **suspension rail type B or H** – see page 12-13
- SAH 216 – for additional fixing to top panel
- Zinc-plated steel – fully recyclable

SAH 215

SAH 216

for fixing to top panel



Item	Order no. left	Order no. right	PU
SAH 215	1 069 643	1 069 644	100
SAH 216	1 069 641	1 069 642	100

for fixing to top panel

Attention: 2 screws necessary, when using SAH 216

Covers for SAH 215/216, plastic

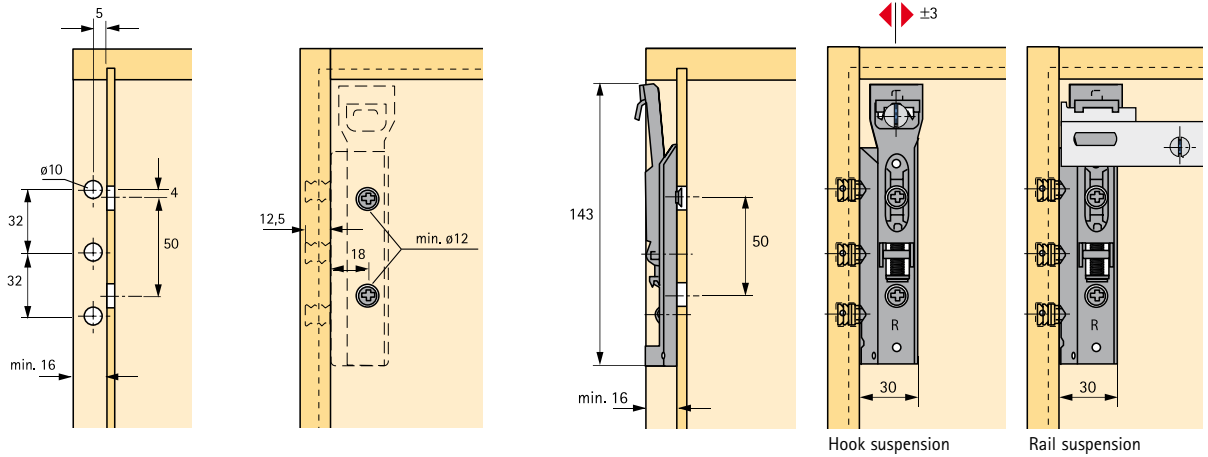


Finish	Order no. for Ø 12 mm	for Ø 15 mm	PU
pure white	1 069 734	1 069 731	5000
mahogany-brown	1 069 735	1 069 732	5000
silver-grey	1 069 736	1 069 733	5000

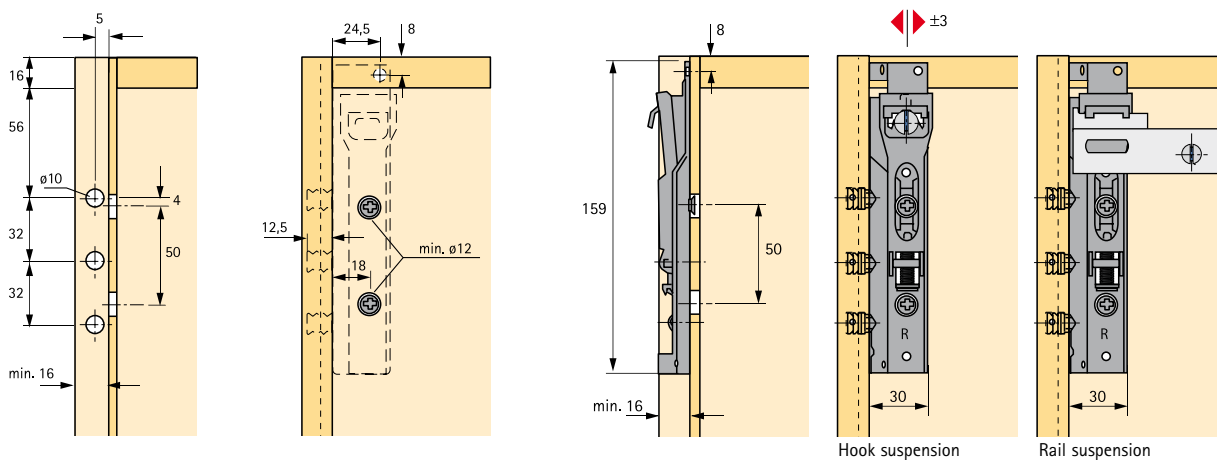
SAH 215 / 216

Mounting

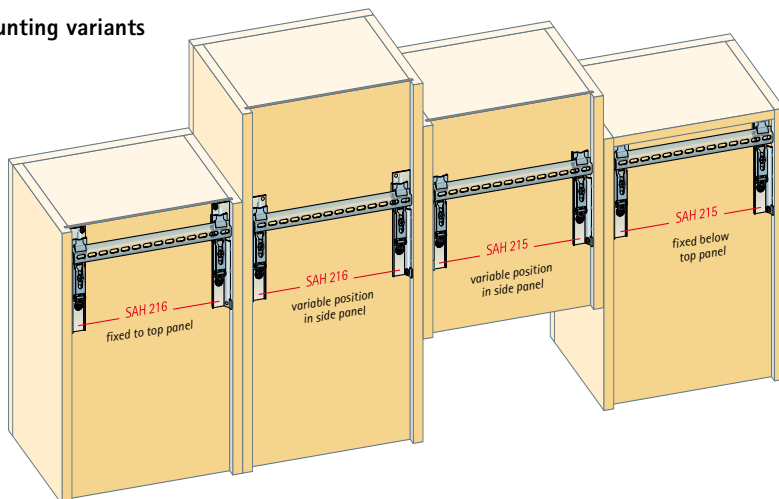
Cabinet suspension brackets SAH 215



Cabinet suspension brackets SAH 216



Mounting variants



Note:

When not fixed to the top panel, SAH 215/216 must be mounted within the upper third of the cabinet!

Adjust height before depth!



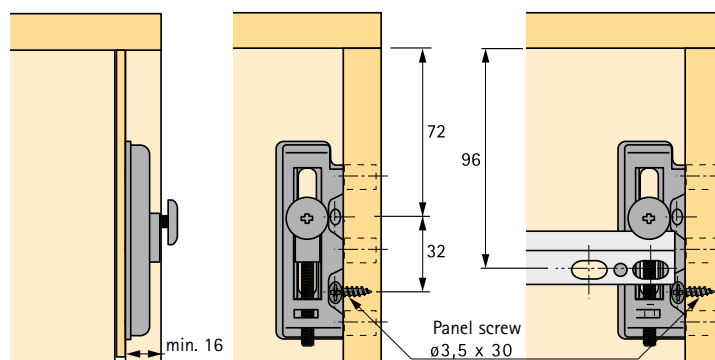
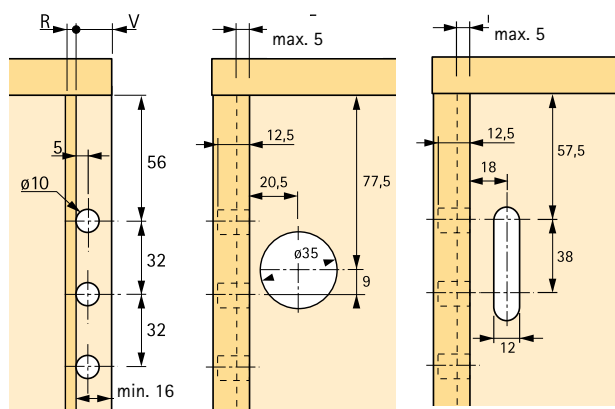
Item



Steel cabinet suspension brackets mounted behind back panel

- For rail suspension – use with suspension rail Type B, H or M (see page 12-13)
- Load capacity 650 N per bracket
- Fixed with 3 dowels in the side panel
- Min. back panel recess 16 mm
- Height adjustment via adjustment screw and gear: ± 14 mm
- Depth adjustment: max. 9 mm (for 16 mm back panel recess)
- Zinc-plated steel

Item	Order no. left	Order no. right	PU
SAH 217	9026219	9026220	200



Covers for SAH 217, plastic



Cover	Finish	Order no.	PU
round	white	9 038 145	1000
round	mahogany-brown	9 038 151	1000
round	silver-grey	9 038 152	1000
oval	white	9 027 226	1000
oval	silver-grey	9 027 230	1000

SAH 305
SAH 302

Item



Cabinet suspension bracket SAH 305

for recessing in solid back panel

Load capacity 200 N per bracket

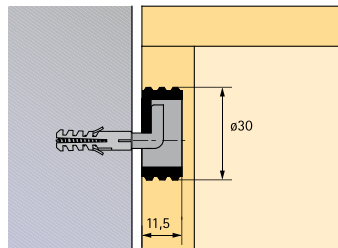
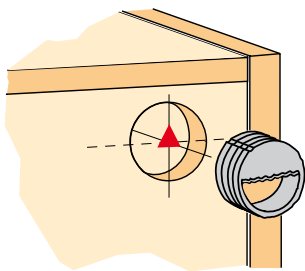
Zinc die-cast

The suspension bracket is pressed into a $\varnothing 30$ mm hole.

Suspension hook

$\varnothing 6 \times 50$ mm

Bright steel



Item	Finish	Order no.	PU
SAH 305	bright	1 005 729	500
Suspension hook 6 x 50 mm	zinc-plated	1 004 973	500

Item



Cabinet suspension bracket SAH 302

for recessing in solid back panel for hook suspension

Load capacity 300 N per bracket

Housing plastic/suspension hook steel

The bracket is pressed into a $\varnothing 35$ mm hole

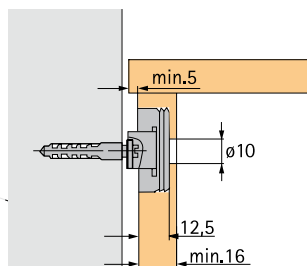
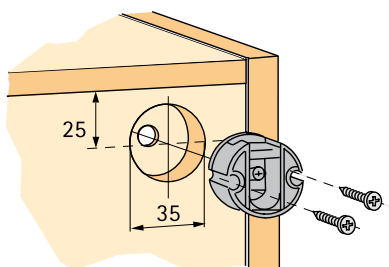
Suspension hook

$\varnothing 6 \times 50$ mm

Bright steel

Fixing screws

$\varnothing 4,8 \times 13$ mm pan-head



Item	Finish	Order no.	PU
SAH 302	white	1 000 791	500
	brown	1 000 861	500
Suspension hook 6 x 50 mm	zinc-plated	1 004 973	500

Type A

Type L

Type M

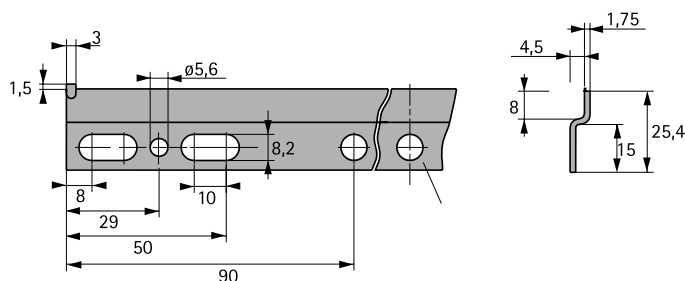
Item

Suspension rail Type A

Use for SAH in cabinet (SAH 130 and SAH 131)
 Load capacity 1500 N per cabinet
 The twisted ends of the suspension rail prevent the cabinet from slipping off.
 Zinc-plated steel

Item	Length mm	Cabinet	Order no.	PU
Type A	250	300	1 007 711	250
	300	350	1 007 712	50
	350	400	1 007 713	50
	400	450	1 007 714	50
	450	500	1 007 715	50
	550	600	1 007 716	50
	750	800	1 007 174	25
	850	900	1 007 717	25
	950	1000	1 007 175	25

Custom lengths on request



Suspension rail Type A

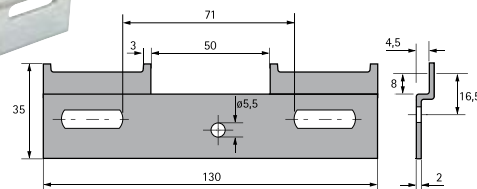
Use for SAH in cabinet (SAH 116, SAH 130 und SAH 131)
 Load capacity 1300 N per cabinet
 The twisted ends of the suspension rail prevent the cabinet from slipping off.
 Zinc-plated steel

Suspension rail Type M

Use for SAH behind back panel (SAH 215, 216 und 217).
 Load capacity 1300 N per cabinet

Item	Finish	Order no.	PU
Type L	zinc-plated	1 012 777	100
Length 130 mm			
Type M	zinc-plated	1 021 315	100
Length 130 mm			

Type L



Type M



Note on load capacity of cabinet suspension brackets and accessories

The following basic rules have to be observed when using cabinet suspension brackets and accessories:

1. We have no influence on either the furniture design or the material and manufacturing quality of the furniture.
2. We also have no influence on the condition of the walls.
3. The screw-in hooks we offer must be used with dowels and are intended for use in solid bricks, sand-lime bricks, concrete or clinker bricks. An 8 mm hole must be drilled and the plastic dowel knocked in flush with the face.

The minimum screw-in depth of the hook is the overall hook length minus 10 mm.

4. For mounting on walls made of other materials, use commercially available special-purpose fixing devices.
5. Wall-mounted cabinets with over 1 sq.m total shelf area (shelves, top and bottom panels) should be mounted on rails that are fixed by at least 4 special-purpose screws, ie, fix with 2 screws in oblong holes on each side (Type A and H).
6. Add-ons like end shelves are not permitted without a separate suspension bracket.

Type H

Type B

Item

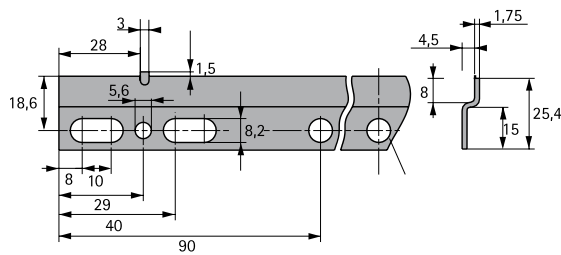
Suspension rail Type H

Use for SAH behind back panel (SAH 215, SAH 216 und SAH 217)

Load capacity 1500 N per cabinet

The indentation in the suspension rail prevent the cabinet from slipping off.

Zinc-plated steel



Item	Length mm	Cabinet	Order no.	PU
Type H	250	300	1 072 407	250
	300	350	1 072 408	50
	350	400	1 072 409	50
	400	450	1 072 410	50
	550	600	1 072 412	50
	750	800	1 072 414	25
	850	900	1 072 415	25
	950	1000	1 072 416	25
	1150	1200	1 072 417	25

Custom lengths on request

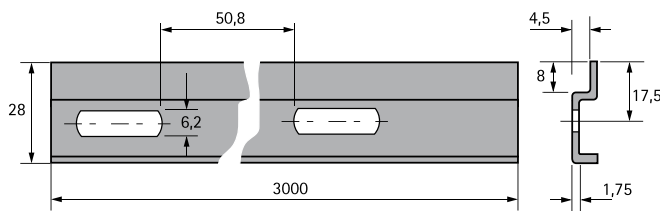
Suspension rail Type B

Use for all SAH.

Load capacity 1500 N per cabinet

Fixed with 2 \varnothing 5.5 x 50 mm special-purpose screws, from 1 sq.m total shelf area with 4 \varnothing 5.5 x 50 mm special-purpose screws.

Zinc-plated steel



Item	Finish	Order no.	PU
Type B Length 3000 mm	zinc-plated	1 007 403	50

Suspension hook

\varnothing 6 x 60 mm
Steel bright



Item	Order no.	PU
Suspension hook	1 011 863	500

Dowel \varnothing 8 x 40 mm

Plastic natural



Item	Order no.	PU
Dowel	1 006 312	1000

Special-purpose screw

\varnothing 5.5 x 50 mm
Pan-head for mounting rails
Chromated steel



Item	Order no.	PU
Special-purpose screw	1 006 978	1000

Lift Junior

Item

Lift junior top box hinge

90 N / 140 N spring force,
75° opening angle

The slender and compact
top box hinge takes up minimum
space inside the cabinet.

Efficient hole line assembly.

Max. flap weight

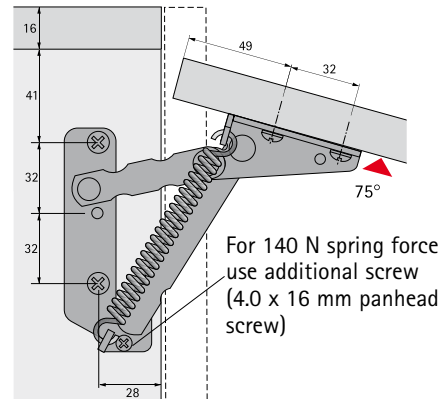
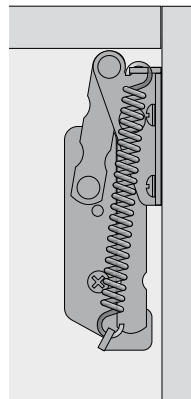
Lift junior 90: 2 kg

Lift junior 140: 2.5 kg

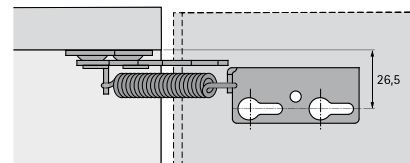
Nickel-plated steel



Mounting



The closed flap is flush
with the top panel for
the dimensions given in
the diagram.



Diagrams valid for
90 N/140 N

Item	Order no. right	Order no. left	PU
Lift junior 90	1 001 145	1 001 144	50
Lift junior 140	1 001 143	1 001 142	50

Fixing screws		Order no.
Side panel	6.0 x 13.7 mm	1 008 114
	6.0 x 14 mm	1 028 128
Flap bracket	4.0 x 16 mm	1 022 982
Additional screw for 140 N spring force	4.0 x 16 mm	1 022 982

Load data for Lift Junior 75°/90 N

Flap dimension = mm; flap weight = kg; base = 19 mm chipboard

Flap height	Flap width									
	300	400	450	500	600	700	800	900	1000	
200	0.80	1.06	1.20	1.33	1.60	1.86	2.13	2.39	2.66	
250	1.00	1.33	1.50	1.66	2.00	2.33	2.66	2.99	3.33	
300	1.20	1.60	1.80	2.00	2.39	2.79	3.20	3.59	3.99	
350	1.40	1.86	2.09	2.33	2.79	3.26				
400	1.60	2.13	2.39	2.66						
450	1.80	2.39								
500	2.00									

Load data for Lift Junior 75°/140N

Flap dimension = mm; flap weight = kg; base = 19 mm chipboard

Flap height	Flap width									
	300	400	450	500	600	700	800	900	1000	
200	0.80	1.06	1.20	1.33	1.60	1.86	2.13	2.39	2.66	
250	1.00	1.33	1.50	1.66	2.00	2.33	2.66	2.99	3.33	
300	1.20	1.60	1.80	2.00	2.39	2.79	3.20	3.59	3.99	
350	1.40	1.86	2.09	2.33	2.79	3.26	3.73	4.19	4.66	
400	1.60	2.13	2.39	2.66	3.19	3.72	4.30			
450	1.80	2.39	2.68	2.99	3.59					
500	2.00	2.66	2.99							

Effect of flap format: larger flap weights can be accommodated if the width of the flap is significantly greater than its height. Make a trial mounting in the case of borderline flap dimensions.

Lift Exact



Item

Mounting

**Lift exact top box hinge
variable spring force adjustment, ultimate
functionality and maximum safety**

The spring force is adjustable from 80 to 220 N to balance the flap weight. This ensures a smooth swinging action and optimal closing and holding forces.

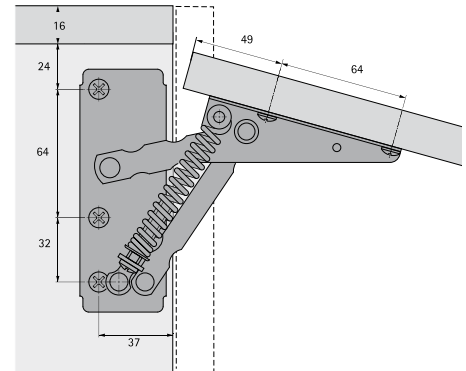
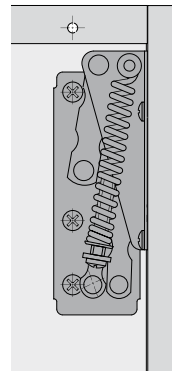
The 75° opening angle swings the flap safely out of harm's way to provide easy access to the cabinet interior. Nonetheless there is no problem with mounting other elements on top of the cabinet.

The spring is mounted absolutely securely.

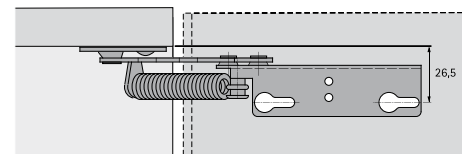
Efficient hole line assembly.

Max. flap weight: 4.6 kg

Nickel-plated steel



The closed flap is flush with the top panel for the dimensions given in the diagram.



Item	Order no. right	Order no. left	PU
Lift exact	1 001 236	1 001 235	50

Fixing screws		Order no.
Side panel	6.0 x 13.7 mm	1 008 114
	6.0 x 14 mm	1 028 128
Flap bracket	4.0 x 16 mm	1 022 982

Load data for Lift 75°/180N

Flap dimension = mm; flap weight = kg; base = 19 mm chipboard

Flap height	Flap width								
	300	400	450	500	600	700	800	900	1000
200	0.80	1.06	1.20	1.33	1.60	1.86	2.13	2.39	2.66
250	1.00	1.33	1.50	1.66	2.00	2.33	2.66	2.99	3.33
300	1.20	1.60	1.80	2.00	2.39	2.79	3.20	3.59	3.99
350	1.40	1.86	2.09	2.33	2.79	3.26	3.73	4.19	4.66
400	1.60	2.13	2.39	2.66	3.19	3.72	4.30		
450	1.80	2.39	2.69	2.99	3.56				
500	2.00	2.66	2.99						

Load data for Lift 75°/220N

Flap dimension = mm; flap weight = kg; base = 19 mm chipboard

Flap height	Flap width								
	300	400	450	500	600	700	800	900	1000
200	0.80	1.06	1.20	1.33	1.60	1.86	2.13	2.39	2.66
250	1.00	1.33	1.50	1.66	2.00	2.33	2.66	2.99	3.33
300	1.20	1.60	1.80	2.00	2.39	2.79	3.20	3.59	3.99
350	1.40	1.86	2.09	2.33	2.79	3.26	3.73	4.19	4.66
400	1.60	2.13	2.39	2.66	3.19	3.72	4.30	4.78	
450	1.80	2.39	2.68	2.99	3.59	4.19			
500	2.00	2.66	2.99	3.33	3.99				

Effect of flap format: larger flap weights can be accommodated if the width of the flap is significantly greater than its height. Make a trial mounting in the case of borderline flap dimensions.

Lift



Item

Mounting screw-on panel H2

Lift top box hinge

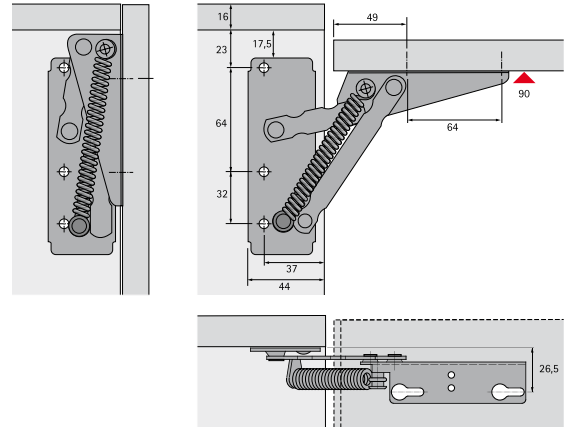
90° opening angle

The flap swings open 90° and is held open in this position to provide optimal access to the cabinet interior.

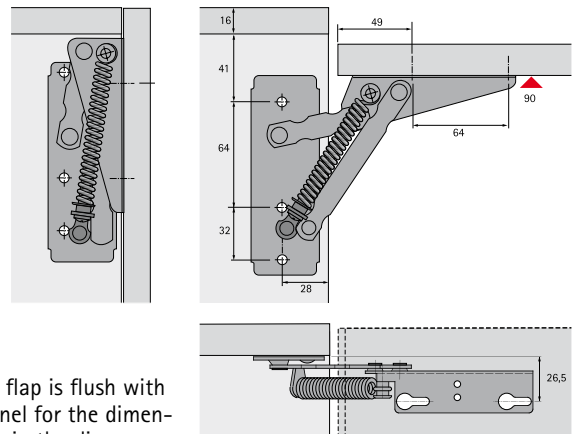
Efficient hole line assembly.

Max. flap weight: 3.3 kg

Nickel-plated steel



Mounting screw-on panel F2



The closed flap is flush with the top panel for the dimensions given in the diagram.

Item	Screw-on panel	Spring force	Order no. right	Order no. left	PU
Lift	H2	180 N	1 065 545	1 065 546	50
Lift	F2	180 N	1 063 313	1 063 314	50
Lift	F2	220 N	1 063 310	1 063 331	50
Lift	F2	80 - 220 N	1 077 341	1 077 340	50

Fixing screws	Order no.
Side panel	6.0 x 13.7 mm 1 008 114
	6.0 x 14 mm 1 028 128
Flap bracket	4.0 x 16 mm 1 022 982

Load data for Lift 90°/180N

Flap dimension = mm; flap weight = kg; base = 19 mm chipboard

Flap height	Flap width								
	300	400	450	500	600	700	800	900	1000
200	0.80	1.06	1.20	1.33	1.60	1.86	2.13	2.39	2.66
250	1.00	1.33	1.50	1.66	2.00	2.33	2.66	2.99	3.33
300	1.20	1.60	1.80	2.00	2.39	2.79	3.20	3.59	3.99
350	1.40	1.86	2.09	2.33	2.79	3.26	3.73		
400	1.60	2.13	2.39	2.66	3.19				
450	1.80	2.39	2.69	2.99	3.59				
500	2.00	2.66	2.99						

Load data for Lift 90°/220N

Flap dimension = mm; flap weight = kg; base = 19 mm chipboard

Flap height	Flap width								
	300	400	450	500	600	700	800	900	1000
200	0.80	1.06	1.20	1.33	1.60	1.86	2.13	2.39	2.66
250	1.00	1.33	1.50	1.66	2.00	2.33	2.66	2.99	3.33
300	1.20	1.60	1.80	2.00	2.39	2.79	3.20	3.59	3.99
350	1.40	1.86	2.09	2.33	2.79	3.26	3.73	4.19	4.66
400	1.60	2.13	2.39	2.66	3.19	3.72	4.30		
450	1.80	2.39	2.68	2.99	3.59				
500	2.00	2.66	2.99	3.33					

Effect of flap format: larger flap weights can be accommodated if the width of the flap is significantly greater than its height. Make a trial mounting in the case of borderline flap dimensions.

Lift Alu



Item

Lift Alu top box hinge for use in aluminium frame doors

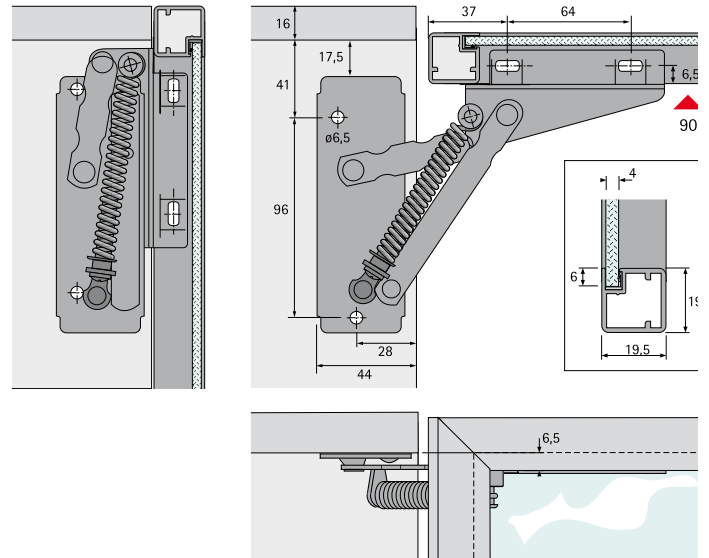
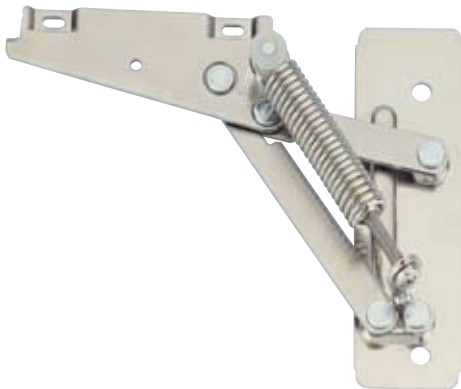
Spring force adjustable from 80 - 220 N, 90° opening angle

The aluminium frame door swings open 90° and is held open in this position to provide optimal access to the cabinet interior.

Max. flap weight: 4.6 kg

Zinc-plated steel

Mounting



Item	Order no. right	Order no. left	PU
Lift Alu	1 067 628	1 067 627	50

The closed flap is flush with the top panel for the dimensions given in the diagram.

Additional screw for Lift 90°/220N

Flap dimension = mm; flap weight = kg; base = 19 mm chipboard

Flap height	Flap width								
	300	400	450	500	600	700	800	900	1000
200	0.93	1.18	1.30	1.43	1.68	1.93	2.18	2.44	2.96
250	1.10	1.41	1.56	1.72	2.02	2.33	2.63	2.94	3.24
300	1.29	1.64	1.82	2.00	2.36	2.72	3.08	3.44	3.80
350	1.46	1.88	2.08	2.29	2.71	3.12	2.53	3.95	4.36
400	1.64	2.11	2.35	2.58	3.05	3.52			
450	1.82	2.35	2.61	2.87					
500	2.00	2.58	2.87						

Effect of flap format: larger flap weights can be accommodated if the width of the flap is significantly greater than its height. Make a trial mounting in the case of borderline flap dimensions.

Parallel lift fitting with pneumatic spring

Adjustable-width parallel lift fitting with pneumatic spring

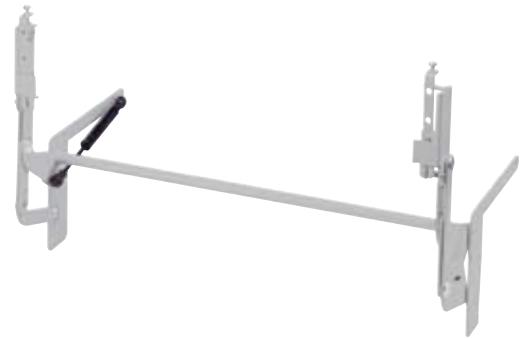


Item

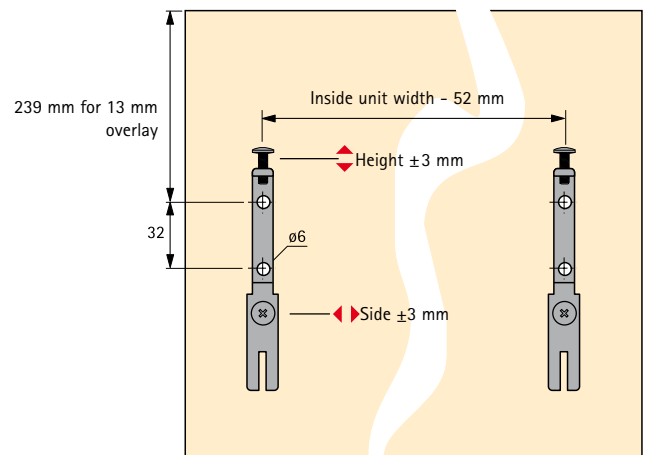
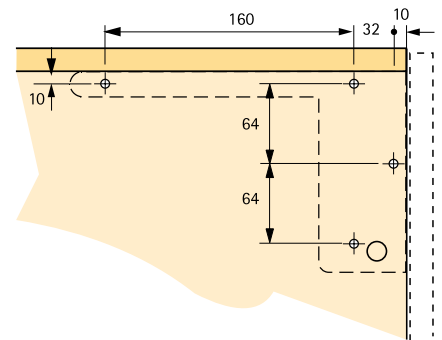
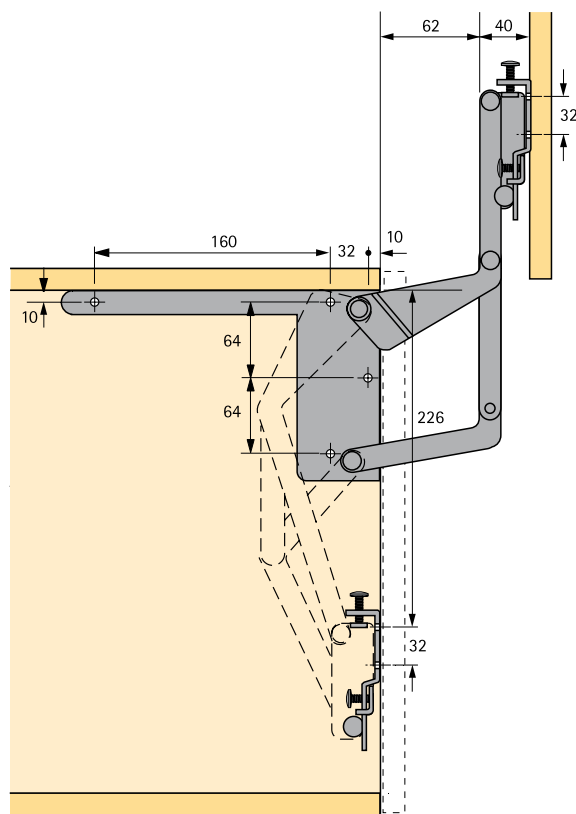
Flap fitting for parallel flap lift

Ideal for microwave ovens, grills and electrical appliances. The spring force supports the unassisted lifting action of the front panel and ensures that flap is held firmly both in the fully open and the closed position.

- Optimal access
- Efficient assembly, the door/flap is simply hooked on and screwed fast
- Two-dimensional front panel adjustment: height ± 3 mm, side ± 3 mm
- Inside unit dimensions:
 - width: (see table*)
 - height: min. 330 mm, max. 450 mm
 - depth: min 215 mm
- One or two pneumatic springs depending on flap weight
- Finish: white or silver plastic-coated steel



Nominal unit width mm	Side panel width mm	*Required inside width mm	Maximum flap weight	Order no. white	Order no. silver	PU
600	16	567	4.6	1 066 481	1 066 482	5
600	18	563	4.6	1 066 480	9 006 057	5
600	19	561	4.6	1 067 461	9 039 521	5
900	16	867	5.5	-	9 011 909	5
411-580	-	-	4.0	9 014 353	9 014 355	5
560-870	-	-	5.0	9 014 357	9 014 358	5



Titan

Item

Titan shelf support

Hidden assembly behind the shelf.

Support bar:

hexagon width across flats 10 mm

Height adjustment: ± 4 mm

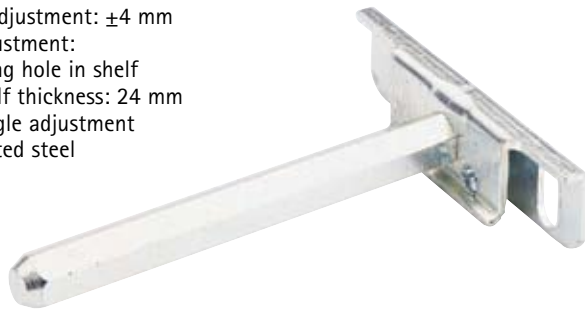
Side adjustment:

via oblong hole in shelf

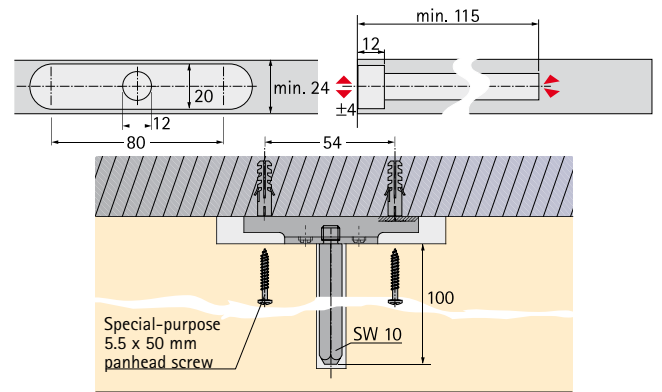
Min. shelf thickness: 24 mm

Shelf angle adjustment

Zinc-plated steel



Mounting



Item	Order no.	PU
Titan shelf support	1 069 728	100

Titan shelf support

Hidden assembly behind the shelf.

Support bar:

hexagon width across flats 10 mm

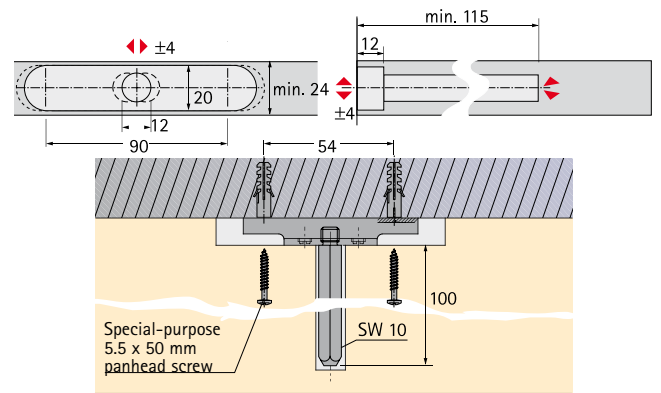
Height adjustment: ± 4 mm

Side adjustment: ± 4 mm

Min. shelf thickness: 24 mm

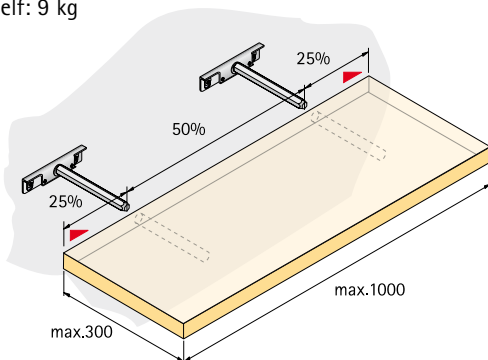
Shelf angle adjustment

Zinc-plated steel



Item	Order no.	PU
Titan shelf support	1 001 167	100

Max. load for two shelf supports
incl. 24 mm thick shelf: 9 kg

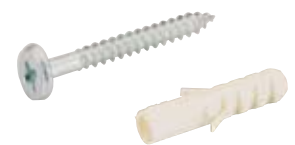


Special-purpose 5.5 x 50 mm panhead screw

Zinc-plated steel

Dowel \varnothing 8 x 40 mm

Self-colour plastic



Item	Order no.	PU
Special-purpose 5.5 x 50 mm screw	1 006 978	1000
Dowel 8 x 40 mm	1 006 312	1000

Shelf supports

Titan

Item

Titan shelf support

Hidden assembly behind the shelf.

Support bar: \varnothing 12 mm

Height adjustment: \pm 4 mm

Side adjustment:

via oblong hole in shelf

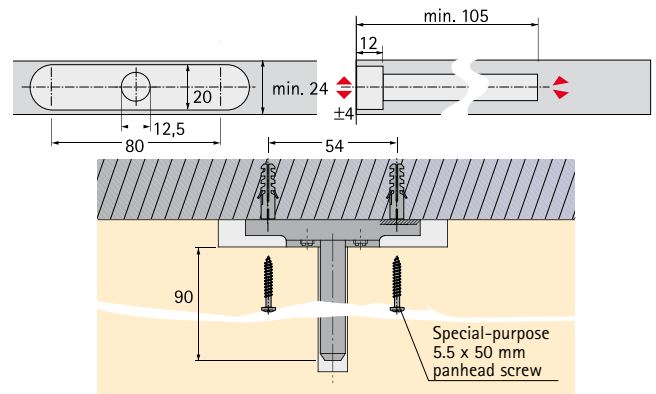
Min. shelf thickness: 24 mm

Shelf angle adjustment

Zinc-plated steel



Mounting



Item	Order no.	PU
Titan shelf support	1 001 033	100

Titan shelf support

Hidden assembly behind the shelf.

Support bar: \varnothing 12 mm

Height adjustment: \pm 2 mm

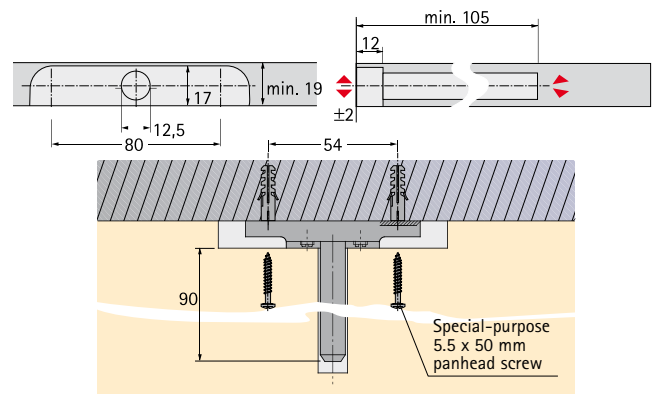
Side adjustment:

via oblong hole in shelf

Min. shelf thickness: 19 mm

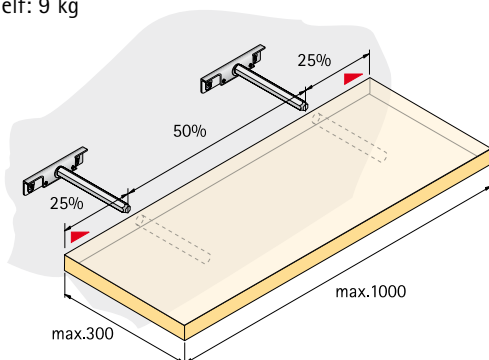
Shelf angle adjustment

Zinc-plated steel



Item	Order no.	PU
Titan shelf support	1 001 481	100

Max. load for two shelf supports
incl. 24 mm thick shelf: 9 kg

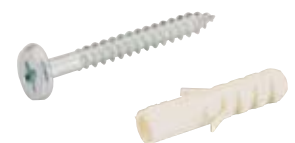


Special-purpose 5.5 x 50 mm panhead screw

Zinc-plated steel

Dowel \varnothing 8 x 40 mm

Self-colour plastic



Item	Order no.	PU
Special-purpose 5.5 x 50 mm screw	1 006 978	1000
Dowel 8 x 40 mm	1 006 312	1000



Hettich Marketing- und Vertriebs GmbH & Co. KG
P.O. Box 1240 · 32269 Kirchlengern · Germany · Phone + 49 5223 77-0 · E-mail: info@de.hettich.com
www.hettich.com